



Wisconsin TURFGRASS NEWS

VOL. XXIV, NO. 3

WINTER 2006

He's Coming Home

By Dr. Wayne Kussow, Emeritus Professor of Soil Science, University of Wisconsin-Madison

In early December Dr. Douglas Soldat will move into the office I occupied for 25 years in the Department of Soil Science before retiring in July, 2005. The 17 month gap between my retirement and Doug's hire would have taken at least 12 months longer if the Wisconsin Turfgrass Association had not committed to funding the position for the first year.

Douglas grew up in Janesville where his career in turfgrass management began with summer employment at the Janesville and Riverside golf courses. To further that career, he enrolled at the UW-Madison in 1998, majoring in Soil Science, specializing in Turf and Grounds Management, and interning at the Northmoor Country Club in Highland Park, Illinois. His goal of becoming a golf course superintendent was sidetracked when I convinced him to go to graduate school at the UW. In so doing, Doug became the first recipient of the Wisconsin Turfgrass Association W.R. Kussow Distinguished Fellowship. He completed his M.S. degree in Soil Science in August 2003 by successfully defending his thesis research on "Inorganic Amendments as Putting Green Construction Materials". Doug then headed off to Cornell



University for a Ph.D.

Douglas completed his Ph.D. in late October, 2006, majoring in Horticulture with a minor in Soil Science and Environmental Engineering. His Ph.D. thesis research, entitled, "The Source of Phosphorus in Runoff from Turfgrass", was conducted under the guidance of Dr. Martin Petrovic.

All new hires in the UW-Madison College of Agricultural and Life Sciences are viewed by the college administration as opportunities to take extension, research, and instruction programs in new directions. Permission to fill the position was granted contingent on changes in responsibilities and research focus. The official split in Doug's appointment is 60% extension, 25% research, and

15% instruction. His research emphasis is nutrient and water management in urban landscapes with turfgrass as a major component. In instruction he will expand the one credit turfgrass nutrition course into a three credit course by adding in units on irrigation and drainage.

Given his outgoing personality, enthusiasm, experience, and excellent communication and organizational skills, Doug is well suited to working as an extension specialist and in interacting with students. Having completed coursework in hydrology, advanced soil physics, watershed engineering and management, advanced quantitative and analytical research methods, geographic information systems and spatial statistics, he couldn't be better prepared to research the complex issues surrounding nutrient and water management in urban landscapes.

Doug is married to a lovely, very talented young lady, Sarah, who herself is a Wisconsin native and a graduate of the UW-LaCrosse. They are the proud parents of son Oliver, born on November 8, 2006. The Soldats have already completed their move to Madison. Anyone wishing to contact Doug can do so via his email address: djsoldat@wisc.edu. 🍷

The Wisconsin Turfgrass News

is the official publication
of the Wisconsin
Turfgrass Association,
edited by Tom Schwab.
O.J. Noer Turfgrass
Research and
Educational Facility.

Happy Holidays from Wisconsin Turfgrass Association!

Start the Year Out Right EXPO '07 SCHEDULED FOR JANUARY 9TH & 10TH

By Tom Schwab, O.J. Noer Turfgrass Research and Education Facility, University of Wisconsin-Madison

The hustle and bustle of Christmas and New Years will soon be over and it will be time to rightly start out your professional year with some good turf education. The WTA Turfgrass and Greenscape EXPO is just the place to learn new ideas and reconnect with other turf professionals to start planning for a great 2007. Speakers will delve into a variety of important subjects that are affecting every turf manager, if not right now then in the near future. The conference will be held at the Madison Marriott - West on Tuesday and Wednesday, January 9th and 10th.

Golf course managers will learn the latest research and economics of rolling putting greens. Additionally, they'll learn about managing summer stresses and diseases, maximizing pesticide performance, new developments in turfgrass fertility, and new fungicides available. More subjects for golf management include controlling pond weeds, using velvet bentgrass on putting greens, and more.

Sports field managers will learn about maintenance of synthetic athletic fields, and the perennial natural-field dilemma of managing excessive wear. They'll likewise learn about other perennial sports field problems including low budget management strategies, and field marking techniques for any size budget.

Other turf and green industry education will include a discussion of how the new NR-151 non-point source pollution regulations will affect the turf profession, Wisconsin's response to the impending emerald ash borer infestation, and the causes of stress to woody ornamentals.



Speakers for EXPO come from many parts of the country, including Dr. John Sorochan from the University of Tennessee, Mike Andresen from Iowa State, Abby McNeal from the Chicago Fire Soccer's Toyota Park, and Dr. Lane Tredway from the University of North Carolina.

Local experts will likewise illustrate their areas of expertise. Loaded with turf management information, Bob Vavrek from the USGA joins the roster, as do Jason Dettman-Kruse from UW-Extension and Doug DeVries from Reid Golf Club. From our UW-Madison turf team, Drs. Kussow, Williamson, Stier and Wolkowski, Eric Koeritz, Paul Koch and our new soils Professor Dr. Doug Soldat will talk

Wisconsin Turfgrass Association 2006 Officers and Directors

President

Rich Riggs '08

Rettler Corporation
3317 Business Park Dr
Stevens Point WI 54481
715-341-2633

Secretary

Dean Mushbach '09

Reinders
7428 Trailwood Dr
Minocqua WI 54548
715-892-1050

Vice-President

Dan Barrett '08

Bergamont Golf Club
2960 Triverton Pike
Madison WI 53711
608-576-9601

Treasurer

Mark Kienert '07

Bulls Eye Country Club
2800 Ridgewood Trl
Wisconsin Rapids WI 54494
715-423-2204

Randy Swonger '09

Trout Lake Golf & C C
3800 Hwy 51 N
Arbor Vitae WI 54568
715-385-2566

Wayne Horman '09

Scotts Company
6001 Hammersley Rd
Madison WI 53711
608-274-7953

Christine Faulks '08

Waupaca Sand & Solutions
E3481 Hwy 22-54
Waupaca WI 54981
715-258-8566

Mike Lyons '07

Old Hickory Golf Club
PO Box 316
Beaver Dam WI 53916
920-887-0030

Dan Biddick '07

National Seed
PO Box 374
Cambridge WI 53523
208-890-4453

Honorary Members

Terry Kurth '08

Midwest Lawn Care
2211 Eagle Dr
Middleton WI 53562
608-798-1490

Monroe Miller '08

Blackhawk Country Club
PO Box 5129
Madison WI 53705
608-238-3023

Tom Harrison '08

Maple Bluff Country Club
500 Kensington Dr
Madison WI 53704
608-249-3468

Year behind board member name, is the expiration of their current term.

about their most current findings. With this impressive roster of speakers and subjects, every attendee will go home with ideas they can put to use right away.

If that's not enough, there is the ever popular trade show segment of EXPO. This year's trade show has a totally new format. It will be a tabletop show, where vendors have their exhibits and information on banquet tables. The knowledgeable sales personnel will explain products, services, equipment, features, prices, and options for everything used to manage turf and landscapes. There will be 'trade show only' time for over an hour Tuesday afternoon and for an hour Wednesday

morning, with other opportunities to stop and network during presentations and lunches.

The EXPO brochures were mailed in early December. Another brochure is included in the newsletter for your convenience. Contact Audra at the WTA Office if you have questions (ajander2@wisc.edu or 608-845-6536). Time is running out for early registration, but you may also register at the door. Remember to bring other members from your staff, who get reduced pricing when they register with someone from the same organization. The program is excellent this year and we hope you can be there. 🌱

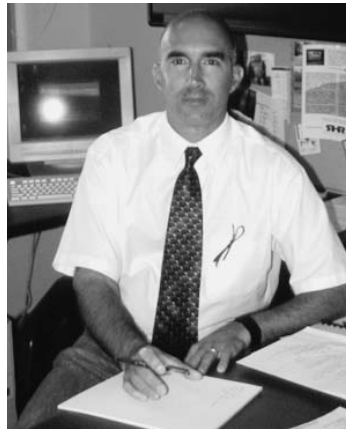
President's Message Congratulations and Introductions for Another Outstanding Year

By Rich Riggs, WTA President

Another growing season has come and gone. Hopefully you had a great season. I know it depended on your location in the state as to the type of weather you experienced. Many parts of the state, especially the North and Northeast had extreme drought, while other parts were fairly average. In the end, individuals in the turf industry do whatever it takes to have a successful year. I know as I travel across this state we have some of the best golf courses, sod farms, athletic fields, lawn care, parks, and school grounds anywhere.

Many of us work under extreme pressure not only from the things we can control but also things we can not control. I would like to say, "Well done." I am very proud of the work I see all of you doing in Wisconsin.

As we approach the end of the year, I am sure most of us are planning for next season. The budgets are reviewed and programs are getting established. One area that I would recommend you plan for is to attend the WTA Turfgrass and Greenscape EXPO on January 9th and 10th.



The speaker list is outstanding and the trade show is always great. Make sure to set money aside in your budgets for you and your staff to attend. The talks are great and networking with colleagues is invaluable.

I'd like to introduce and welcome three new additions to the WTA. One is the recent hiring of Dr. Doug Soldat to fill the position of Dr. Wayne Kussow in the Department of Soil Science at the UW-Madison. This hiring, I am proud to say, occurred faster than it would have because of the WTA. They felt the void left by Dr. Kussow's retirement and convinced the University to fill

the position quickly by committing to fund the position for the first year. The second introduction is only partially related to the WTA. That is the hiring of Dr. Molly Jahn to become the new Dean of the UW-Madison College of Agricultural and Life Sciences. She officially took the reins as the Dean of CALS on August 1st. And, in case you missed it, she attended and spoke at WTA Summer Field Day on her very first day on the job. Third is not a person to introduce but a website. The WTA now has one, thanks to lots of work from Dena Zajdel from Waupaca Sand and Solutions in creating the page. You may read more about this later in the newsletter.

Lastly I would encourage any of you, who have the interest, to get involved on the board by contacting me or any other board member. We are always looking for good people to help serve on the board. Again, I congratulate you on another outstanding year. I hope to see you at EXPO. 🌱



Check This Out

<http://www.wisconsinturfgrassassociation.org>

By Tom Schwab, O.J. Noer Turfgrass Research and Education Facility, University of Wisconsin-Madison



WTA has a great new website. You now have an easy link to check out current turfgrass events and search the history of your association. The website went online in early November, thanks to Dena Zajdel from Waupaca Sand and Solutions who created the web page.

Menu options include information on WTA sponsored events including Summer Field Day, Homeowner Field Day, Golf 'Fundraiser for the Fellowship', and Winter Turfgrass and Greenscape EXPO. Other options include mission of the WTA and the history of the OJ Noer Turfgrass Research and Education Facility, archives of past WTA newsletters,

and previous turfgrass research reports.

Continue on and you have a quick method to contact the WTA or link with many affiliated organizations that work with turfgrass, including:

- Golf Course Superintendents Association of America
- Wisconsin Golf Course Superintendents Association
- Turf Producers International
- Sports Turf Managers Association
- Wisconsin Sports Turf Managers Association
- University of Wisconsin-Madison
- University of Wisconsin-Madison Turfgrass Diagnostic Lab
- University of Wisconsin Extension
- Badger Turf and Grounds Club
- Wisconsin Turfgrass Research and Education
- Professional Landcare Network

The website has been a long time in coming but is worth the wait. Whether you need to find results from a past turfgrass research report or download an application to Summer Field Day, there is now one more method to get the information you need. Try it out. I think you'll like it. The website is a work in progress and we'll do our best to keep everything current. Please contact us at the Noer Facility if you have a suggestion to improve the site. 🍷

2007 School of Turfgrass Management

By Dr. John Stier, University of Wisconsin-Madison

The 2007 School of Turfgrass Management will be held on the west side of Madison, WI at the West Madison Agricultural Research Station from February 5-9. The short course is geared towards turf professionals regardless of their educational background. Past attendees include lawn care operators, golf course employees, school/sports turf personnel, sod producers, consultants, product distributors, and more.

This week-long short course provides the equivalent instruction of a full 3-credit, semester-long course at the university for only \$575. Attendees also receive a large binder full of helpful reference information including booklets and identification guides.

The course content is unlike any single course at the University as it combines information from a variety of disciplines. Monday sessions focus on turf

growth, species selection, turf identification and establishment. Tuesday sessions focus on soil types, soil physical properties including compaction and drainage, plus properties of various fertilizer types and timing. Wednesday sessions start with pesticide laws and applications, continue with hands-on instruction for pesticide calibration, then finishes with weed identification and management. Thursday covers water use, irrigation systems, insect pests, and diseases. The course concludes Friday at noon following a course review and interactive discussion and training on handling mass media interviews and public complaints. For more information contact John Stier at 608-262-1624 (office) or call Audra Anderson at 608-845-6536 for a brochure. Registrations are due by January 22. 🍷

Patchwork Putting Green Problems

By Paul Koch, Turfgrass Diagnostic Lab, University of Wisconsin-Madison

Wisconsin is blessed with a large number of classic golf courses that are approaching 100 years old. Cultural practices have changed dramatically since these courses were constructed, and nowhere are they more evident than on the putting green. Extremely low mowing heights, decreases in nitrogen fertilization, and increased rolling are now regular practices on many older golf courses to satisfy golfer and/or member demands. Unfortunately, the original turfgrasses planted on these greens oftentimes cannot handle these practices, especially when coupled with harsh environmental conditions like heat or drought.

Over time this creates a patchwork of different types of turfgrass inhabiting your putting green. There are older varieties of creeping bentgrass such as 'Washington' bentgrass or the old German bentgrasses. Colonial bentgrass is another type of grass that can be found in patches growing on certain greens. Annual bluegrass can inhabit relatively new golf course putting greens, and oftentimes make up half the

putting surface or more on some older golf courses. These different species and varieties of bentgrass can become difficult for the superintendent to manage because they all have differing susceptibilities to disease and even chemical injury.

Dollar spot is a good example of a disease that will aggressively attack certain patches of bentgrass on a green while others will remain unharmed. Numerous samples sent to the Turfgrass Diagnostic Lab from older golf courses throughout Wisconsin and Minnesota have had serious infections of *Bipolaris* leaf spot, but only on the older patches of bentgrass inhabiting their putting green or fairway (Figure 1). Fungicides that have traditionally controlled this pathogen on newer bentgrass varieties in the past have not been effective on the older varieties, and more research needs to be done to effectively control this in the future.

Pesticides can also cause very different reactions from different patches within the same area. A prime example occurred just this spring, when an annual bluegrass germination inhibitor

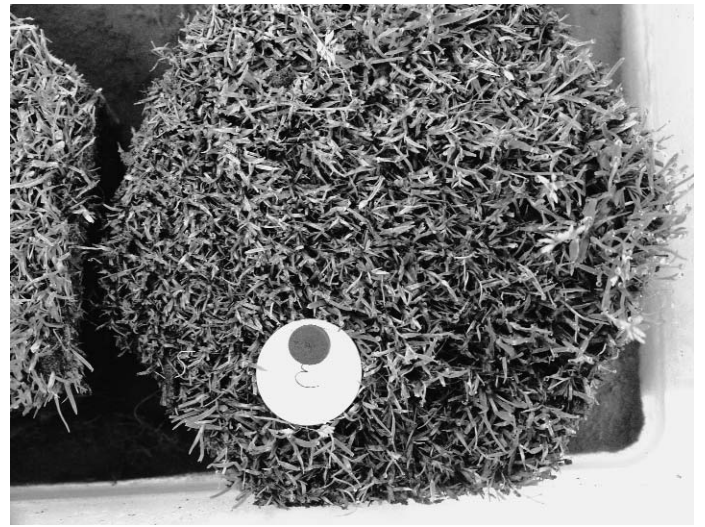


Figure 1: *Bipolaris* leaf spot only affecting older varieties of bentgrass

was applied to several putting greens with different patches of older creeping bentgrass varieties. The inhibitor severely pruned the roots of the older bentgrass varieties, thinning out the patches and disrupting ball roll over a long period of time (Figures 2 and 3). It is very important to carefully read the labels of all pesticides, but this is even more important for those who manage particular varieties of grass that the label may caution about. 🌱

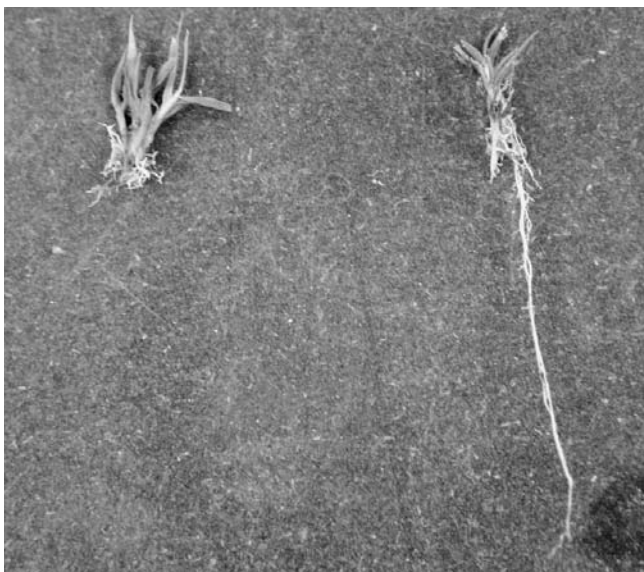


Figure 2: The older bentgrass variety on the left has been severely root pruned by an herbicide

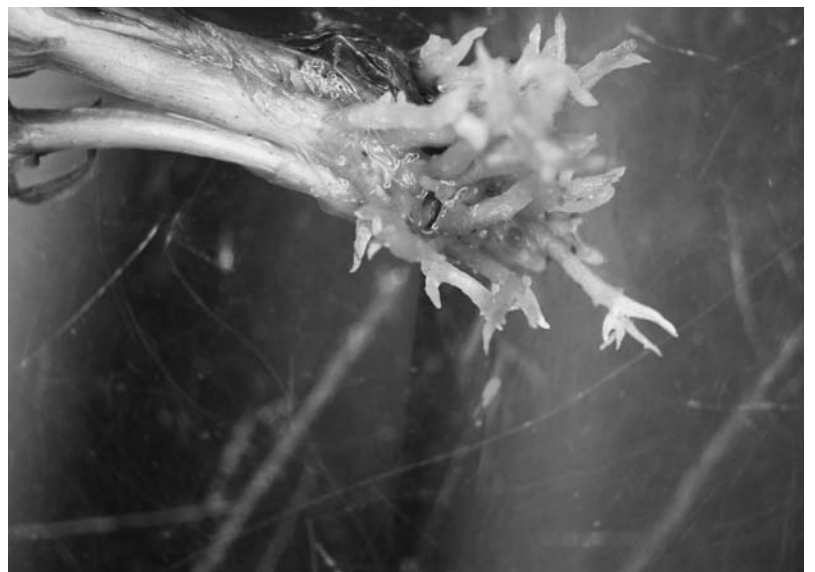


Figure 3: Close-up of the chemically-pruned roots on the older bentgrass variety

CALENDAR OF EVENTS

Jan 9,10	WI Turfgrass and Greenscape EXPO 07	Marriott Madison West
Jan 10	WNA Winter Workshop	Country Springs Hotel, Waukesha
Jan 17-19	Mid-Am Trade Show	Chicago, IL
Jan 17-21	STMA Annual Convention and Exhibition	San Antonio, TX
Jan 18	WGIF Annual Convention Banquet	Hyatt, Chicago
Feb 4-10	TPI Midwinter Conference	Gold Coast, Australia
Feb 5-9	School of Turfgrass Management	UW-Madison
February 15	Pesticide Applicator Training/Testing	Waukesha
Feb 19-24	GCSAA Conference & Golf Industry Show	Anaheim, CA
February 28	Pesticide Applicator Training/Testing	Eau Claire
March 1	Pesticide Applicator Training/Testing	Green Bay
Mar 6,7	NGLGCSA Annual Turf Symposium	Midway, Wausau
March 8	Pesticide Applicator Training/Testing	Arlington
March 13	Pesticide Applicator Training/Testing	Waukesha
March 14,15	Reinders 18th Turf & Irrigation Conference	Waukesha Expo Center
April 4	Pesticide Applicator Training/Testing	Waukesha
July 23-26	TPI Summer Convention and Field Day	Marriott Madison West
July 26	TPI/ WTA/ MSC Summer Field Day	OJ Noer Facility, Verona

WTA Members — If you have an important date you'd like to share with other members, call 608-845-6895, fax 608-845-8162, or email tgschwab@wisc.edu to include it in the next calendar.

Contact Telephone Numbers

GCSAA/ GIS	GCSAA Conference & Golf Industry Show	800-472-7878
Mid-Am	Mid-America Horticultural Trade Show	www.midam.org
MSC	Midwest Sod Council Summer Field Day	630-685-2318
NGLGCSA	Northern Great Lakes Golf Course Superintendents Assoc.....	715-542-2373
PAT	Pesticide Applicator Training/Testing	608-262-7588
PLANET	Professional Landcare Network	800-395-2522
Reinders	Reinders Turf & Irrigation Conference.....	800-782-3300
School	School of Turfgrass Management	608-262-1624
STMA	Sports Turf Managers Association.....	800-323-3875
TPI	Turf Producers International Field Day	800-405-8873
WGCSA	Wisconsin Golf Course Superintendents Association	414-786-4303
WGIF	Wisconsin Green Industry Federation Convention	414-529-4705
WNA	Wisconsin Nursery Association Winter Workshop	414-529-4705
WSTMA	Wisconsin Sports Turf Manager Association	608-845-6895
WTA	Wisconsin Turfgrass Association	608-845-6536

Experience of a Lifetime

By Tom Schwab, O.J. Noer Turfgrass Research and Education Facility, University of Wisconsin-Madison

Erin Hills Golf Course along with Superintendent Jeff Rottier hosted the WTA Golf 'Fundraiser for the Fellowship' on Oct 10th, 2006. The day was a total success for the WTA and an experience of a lifetime for the golfers. The WTA benefited when the event sold out for the fifth year in a row. The fundraiser netted \$7,000 to help support turfgrass research into the future. Golfers benefited by being early witness to one of the most interesting and fun courses to ever open in Wisconsin.

Erin Hills lived up to its owner Bob Lang's goal of "wanting to create a unique golf experience

you can't find anywhere else." Tour pro Charles Howell said of Erin Hills, "It's Whistling Straits on steroids." Howell made that comment when the course was set up at its full 8,100 yards. Fortunately, the WTA golfers played the course at a more realistic length. But what really made the day was the beautiful scenery and challenging golf shots that were spectacular at every turn.

The weather cooperated with conditions at 50 degrees, slightly windy, and overcast. Rain threatened during the day but didn't arrive until everyone was off the course. It could have



Our host Jeff Rottier shares conversation with Bruce Schweiger from Reinders.



The scenery was beautiful at every turn.

been a little warmer for those that didn't bring a windbreaker, but no complaints were heard as everyone enjoyed the unbelievable golf experience.

Besides the incredible golf outing, almost everyone went home with a nice door prize, some worth more than the entry fee. We'd like to thank everyone who donated prizes. They are listed here. If I missed putting your name on the list, we still appreciate your donation. Two other donations to mention include Reinders Turf and Irrigation for providing hot hors



Greg Auten, from the Old Hickory Golf Club Board of Directors, aims one for the fairway.

d'oeuvres and Beechwood Distributing for providing Smithwick's Irish Ale after the round. The golf hole sponsors should likewise be thanked. These individuals or businesses, listed here, gave \$100 to name a hole and additionally support turf research.

The winners of the 4 person best ball were a foursome from Whistling Straits; David Swift, Grant Davey, Chris Deckard, and Jim Leibham. These guys had the inside edge with their knowledge of fescue fairways and long drives.

Lots of camaraderie was shared amongst the sold-out crowd from the time they arrived to hit practice balls to the post-game handing out of door prizes and golf hole winners. This course sure lived up to its claims of being a unique golf experience, and the 144 participants in this year's 'Fundraiser for the Fellowship' would agree. 🍀

2006 WTA Golf Fundraiser Tee Sign Sponsors:

- Agrotain International
- Aquatrols
- Arthur Clesen
- DHD Tree Products Inc
- E-Z-Go A Textron Company
- Green Bay CC
- Midwest Turf Products
- Oneida Golf & Country Club
- Pendleton Turf Supply
- ProSource One
- Rolling Meadows GC
- Sue Kershasky
- UAP Professional Products
- Wausau CC
- Westmoor CC Grounds & Green Committee

2006 WTA Golf 'Fundraiser for the Fellowship' Door Prize Donors:

Partial list of door prizes

Agrotain	Dozen balls, fancy watch
Aquatrols	Home Depot Gift Certificate
Arthur Clesen	Golf shirt
BASF	Various prizes
Brian Swingle	Windshirt
Bridges Golf Course	Foursome with carts
Bristlecone Pines GC	Two foursomes of golf with carts
Bruce Schweiger	Bicycle
DHD	Golf bag
Evergreen CC	Foursome of golf with cart
Jerry Kershaski	2 chipping wedges
John Hegge	Badger/Penn State Football tickets plus other prizes
Lawsonia	Foursome with cart
Lesco	Golf shirt, sleeve balls, leatherman knife
Midwest Turf Products	Windshirt
New Berlin Hills	Foursome of golf with carts
Oconomowoc Golf Club	Foursome with carts
Old Hickory	Golfwear
Pendleton Turf	Two cases of Guinness, two Home Depot gift certificates
ProSource	Dozen Balls, windshirt
Reinders	Hors de oeuvres
Scott Schaller	Golf prize
Stoughton Country Club	Foursome with carts
Syngenta	Two golf clubs, beer, fishing poles, gift certificate
Tom Schwab	Two Golf bags, shirt
UAP	Putter, dozen balls
Washington Co GC	Twosome of golf
Waupaca Sand	DVD player
West Bend CC	Golf shirt



It's All About Professionalism

By Peter Bemis and Cory Ganser, UW-LaCrosse and Rettler Corp

The WSTMA Fall Meeting, held at Mount Mary College on November 30, featured Mr. Floyd Perry from Grounds Maintenance Services of Orlando, Florida as one of our speakers. Mr. Perry's years of experience in athletic field maintenance has fueled his enthusiasm for the sports turf profession as he displays excitement throughout his presentations. Additional great information was given by our three other presenters; Dr. John Stier from the UW-Madison, Dr. Jason Dettman-Kruse from UW-Extension, and Greg Eaton from Olds Seed Solutions.

The morning session began with Greg Eaton of Olds Seed Solutions talking about breeding turfgrass for improved performance, which is something all sports turf managers could benefit from on their athletic fields in addition to general grounds. All turf managers will benefit from these advances such as increased endophyte levels, salt and drought tolerance, and improved color and aggressiveness to name a few.

Next to speak was Floyd Perry. Between his colorful stories and pictures of labor saving inventions, gathered from throughout the world, he had a very important message that we all should heed. Be professional if you want to be treated like a professional. As we walk down that road towards professionalism, there are several steps (no pun intended) to take along the way. Be aware of your surroundings, use your eyes, write things down (document everything), take pictures, lots and lots of pictures, learn the importance of working together as a team, learn something new every day, and don't get stuck in a rut. Other ideas he communicated to promote professionalism include:

- Your most important mechanical tool is your camera, use it daily.
- Always carry a digital camera to capture the good, the bad, and the ugly. Forward copies of these pictures to Mr. Perry at grounds@digital.net.
- Always carry a digital camera to document field conditions, and capture new ideas in equipment and techniques.
- Don't be afraid to ask for help. Parent's groups can be a great resource.
- LOOK SIDWAYS, recognizing your supporters and fellow professionals.
- Attend educational sessions to learn how to "Work Smarter, Not Harder".
- Your greatest asset is "your eyes". You are judged by the appearances of your facilities, not by excuses.
- Keep your shop and facilities neat and orderly, they represent your level of professionalism and ability to manage staff and equipment.
- Staff should have logo tags and name tags on their shirts to promote your agencies, pro-

mote recognition of your staff, and to enhance the success of the staff.

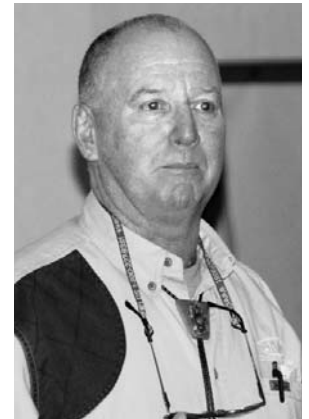
- Create interest in your facilities through signage and other improvements.
- Write to your supervisor to thank them for the support to attend this educational session and point out 3-8 items that you learned, or need to address.

Dr. John Stier was next on the agenda and he shared the latest information from the DNR on their NR151 non point source pollution regulations. These regulations will affect the way managers of farm and urban lands conduct daily practices from having a management plan, to soil testing, to conducting cultural practices.

After lunch, which was provided by Rettler Corporation, Floyd Perry took the floor again discussing "Homemade Tools and Staying within the Budget". He showed pictures of innovative tools that field managers have invented from all over the world, to make maintenance easier and better. Several of the slides were from Wisconsin and Floyd mentioned to keep looking for new ideas and to send those ideas to him and to the WSTMA newsletter to share with your peers. Sports field management is a profession that benefits greatly when people share ideas.

Finally, Dr. Jason Dettman-Kruse from UW-Extension shared information on the characteristics and use of controlled release nitrogen sources. This information will come in handy this winter in making plans for the 2007 season, and determining which product to use and when depending on conditions and desired outcome.

On behalf of the 68 attendees, I would like to extend a big thank you to our host, Cheryl Burton and Mount Mary College, for providing their facility and to all who helped plan this event. See you all in January 2007 for our next sports turf educational gathering at the Winter Turfgrass and Greenscape EXPO. 🇺🇸



Floyd Perry from Grounds Maintenance Services of Orlando gave two very informational talks.



Dr. John Stier was another great guest speaker at the fall meeting.



The large crowd of 68 interested sports field managers were delighted with the good education they came to hear.

Education Abounds at Field Day 2006

By Tom Schwab, O.J. Noer Turfgrass Research and Education Facility, University of Wisconsin-Madison

Turfgrass Field Day 2006 delivered excellent education and inspiration to over 300 guests who took a break from their busy work schedules on August 1st. Attendance at Field Day included 266 attendees and 78 sales representatives from 31 companies. Several distinguished guests also attended including Dr. Molly Jahn, the new Dean of the UW-Madison College of Agricultural and Life Sciences, and Dr. Irwin Goldman, Associate Dean of the College. Kirk Hunter, Executive Director of Turf Producers International, was also in attendance.

The day was extremely warm with temps in the 90's and full sun, and the Noer Facility was in all its glory from an inch of rain five days earlier. The research tour was likewise outstanding with interesting presentations covering many 2006 turfgrass management investigations and findings.

The day started out with a welcome by Dr. John Stier representing the WTA, Brett Grams from the sports turf industry, and Dean Molly Jahn representing the UW-Madison. This was Molly's first day as the new Dean of our college, and we feel honored she chose that day to attend our industry's foremost summer event.

Next the 300 plus guests broke into two groups for the research tour, one group visiting golf turf research and the other group visiting research focused on the sports turf, sod production, and lawn care industries. There were eight presentations on each tour with so many new discoveries to be learned. Many talks crossed over and had information for all turf management professions.

Graduate student Jake Schneider gave one such presentation about using rain gardens to control urban runoff. His work evaluates the ability of turfgrass and native plant rain gardens to filter rainwater and replenish groundwater.

Attendees also learned about new and old turfgrass species and cultivars. Dr. Geunhwa Jung presented his work on breeding perennial ryegrass and creeping bentgrass with the goal of resistance to multiple diseases. Graduate student Eric Koeritz presented his work about managing an old fairway and greens specie that has had limited use to date but holds good potential for the future.

Attendees learned of the effectiveness of a new herbicide to remove annual bluegrass from athletic fields, sod farms, and other turf areas. Additionally there was a presentation about a new product for selective control of quackgrass and tall fescue. One other presentation focused on pre-emergent crabgrass control products.

There were two nutrition presentations, one for managing existing turf and the other for establishing turf. Attendees learned about new and existing products for control of dollar spot on golf courses



Dr. Molly Jahn, the new Dean of the UW-Madison College of Agricultural and Life Sciences, welcomes attendees to Summer Field Day 2006. Attendees also welcomed her. This was her first day as the new Dean.



Not all talks were directly about turf. Dr. David Drake from the UW Department of Wildlife Ecology spoke about wildlife damage management in and around suburban areas.



Charlie Frazier, from Nakoma, collecting information from the trade show.

**2006 Wisconsin Turfgrass Association
Summer Field Day Commercial Participants**

- Arthur Clesen
- Bayer Environmental Science
- Bell Laboratories
- Champion Greens
- Conserv FS
- Contree Sprayer & Equipment
- Deer Creek Seed
- DHD Tree Products
- Dow AgroSciences
- DryJect of Wisconsin
- Ero-Tex
- Frontier FS
- Green Image
- Horst Distributing
- Lesco
- Lohmann Sports Fields
- Miller & Associates - Sauk Prairie
- Midwest Turf Products
- North Pacific Ag Products
- Olds Seed Solutions
- Olsen Distributing
- Pendelton Turf Supply
- Players Choice Athletic Fields
- ProSource One
- Reinders
- Syngenta
- The Andersons
- UAP Professional Products
- Waupaca Sand & Solutions
- Wisconsin Dept of Agriculture
- Wisconsin Turf Equipment

and further learned all about five common home lawn diseases.

Two talks exposed concerns with animal and insect pests. Dr. David Drake spoke about wildlife damage management in and around suburban areas. Dr. Chris Williamson spoke about a potentially larger problem of the emerald ash borer, which could eliminate many of the ash trees in our state.

All this information from the research tours was educational and empowering. So was the value from the afternoon trade show. The summer field day exhibitors presented every tool, service, or advice needed to better manage turf areas. This year's participants in the trade show are listed here. Be sure to call on them for all your turf needs.

To finish the day, there was an optional Wisconsin Sports Turf Managers Association sponsored tour of Warner Park, the home field of the Madison Mallards baseball team. This tour included an educational tour of Olds Seed Solutions, located near Warner Park. The day was jam packed with varied learning opportunities. I hope you were able to take advantage of the wonderful day. 🇺🇸



The Wisconsin Turf Equipment/ Horst Distributing display was huge this year.



Paul Koch from the UW Turfgrass Diagnostic Lab, answers questions on dollar spot management.

PESTICIDE CERTIFICATION:

Would Continuing Education Beat Re-Testing?

By Dr. John Stier, University of Wisconsin-Extension

Pesticide certification is required by law for persons who apply restricted use pesticides, those who apply pesticides for hire to other people's property, or for anyone who applies a pesticide at a K-12 school. The Federal Insecticide, Rodenticide and Fungicide Act of 1972 established the need for pesticide certification. In Wisconsin, pesticide certification is administered through the ATCP 29 rule. The University of Wisconsin-Extension's Pesticide Applicator Training Program (UWEX-PAT) is responsible for developing and conducting educational/training materials, while the Wisconsin Department of Agriculture, Trade and Consumer Protection is responsible for testing and distributing certifications.

In most states, once an applicator is certified, he or she only needs to attend occasional educational events to maintain their certification. Such a system is common for many other certifying agencies and ensures certified personnel stay up-to-date on numerous aspects of their profession. In most states, attendance at one or two conferences or field days every one to two years provides sufficient credits towards recertification. In Wisconsin, however, certification is valid only for five years: at the end of five years, applicators are required to re-test. UWEX provides both a self-study book and a one day training session for pesticide certification.

Our training sessions used to include up-to-date information on pest biology and control strategies. About four years ago we were told to discontinue including such information in our training sessions and instead focus on regulations. Surprisingly, a survey we conducted in 2004 showed most pesticide applicators received the majority of their knowledge on integrated pest management from our training sessions. This information is no longer provided.

The person who was responsible for determining the content of our training sessions is no longer around. On the other hand, public scrutiny on pesticide application is increasing, particularly in urban settings where most of the turf and ornamental applications are conducted. Since rules and common sense rarely change, one has to wonder if the UWEX PAT program is doing a disservice to the industry by no longer including a holistic approach to pest management.

Those of us who conduct PAT for turf and ornamentals have repeatedly sought to change the system to allow certified applicators to maintain certification through educational credits rather than simply retesting on essentially the same information every five years. Re-testing would still be an option for those who don't obtain sufficient educational credits. Such a system would accomplish two objectives: 1) relieve the strain on an overtaxed bureaucracy so efforts could be geared for better overall public service, and 2) ensure our state's pesticide applicators are using the most up-to-date information to manage pests while ensuring public and environmental safety. We have been told the request for educational credits must come from the industry to the Wisconsin Department of Agriculture, Trade and Protection as this would require a change in ATCP 29. The rule is due to be "opened" for revision in the next year or two, and requests for changing it should be made now. If you have any questions please feel free to contact me at 608-262-1624 or jstier@wisc.edu.

Regardless, we'll see you at the training/testing sites in 2007. The times and dates are listed below. You'll need to purchase a training manual prior to the exam; these can be obtained from the PAT office at <http://ipcm.wisc.edu/pat/> or by calling 608-262-7588. 🇺🇸

2007 Pesticide Applicator Training/Testing Sites

February 15	Waukesha
February 28	Eau Claire
March 1	Green Bay
March 8	Arlington
March 13	Waukesha
April 4.....	Waukesha